

Biosecurity and Your Pig Project

# Champions Guide to Swine Biosecurity



# Table of Contents

<b>What is Biosecurity?</b>	<b>2</b>
<b>Disease Transmission</b>	<b>3</b>
<b>General Biosecurity</b>	<b>4</b>
<b>Ready to Start Your Project?</b>	<b>6</b>
<b>Selecting a Pig for Your Project</b>	<b>7</b>
<b>Preparing for a Swine Exhibition</b>	<b>8</b>
<b>At the Show</b>	<b>9</b>
<b>Returning Home</b>	<b>10</b>
<b>Glossary &amp; References</b>	<b>11</b>



# Introduction

Did you know that regardless of how many pigs you care for, whether it's a single show pig or thousands of market hogs, you are part of the pork industry? And, just as you are responsible for keeping your show pig(s) healthy, you share the responsibility of keeping all of the pigs in the United States healthy. A healthy swine herd starts with raising healthy pigs at home, and raising a healthy pig starts with biosecurity. This booklet is intended for youth exhibitors of all ages and levels of experience. In it, you will find recommended biosecurity guidelines to follow on the farm and when taking pigs to fairs and exhibitions.

**Each year, approximately 123,250 sows are bred for the production of show pigs, exhibition swine or purebred seedstock.<sup>1</sup>**

For context, this scale of sow inventory would position the showpig segment among the top 20 pork production entities in the U.S., as ranked by Successful Farming's 2024 Pork Powerhouse report.<sup>2</sup>



# What is Biosecurity?

Biosecurity means doing everything you can to reduce the chances of an infectious disease being carried onto your farm by people, animals, equipment or vehicles.



**Developing and following a biosecurity plan is the best way to prevent and control the spread of swine diseases.**

Biosecurity is a combination of management practices designed to prevent the introduction and transmission of diseases and disease-causing agents into a herd.

Procedures typically associated with a biosecurity plan include barn equipment, show equipment (brushes, driving devices, feeders, buckets, sprayers, etc.), clothing, transport vehicle/trailer sanitation,, rodent control, worker and visitor entry policies and general farm security measures.

## But what does biosecurity mean for me?

Biosecurity begins when you purchase your pig and is a continual process. Biosecurity involves working with experts who can:

- ★ Help you understand how to prevent exposing your pigs to diseases and keep them healthy.
- 2 ★ Help you develop a written biosecurity plan specifically for your farm.

# Disease Transmission

To develop a biosecurity plan, you need to first understand how diseases can infect your pig.



Diseases can be transmitted from pig to pig in many ways. By understanding how diseases spread, you can create a biosecurity plan to best keep your pigs healthy.

## How do diseases spread?

Pigs are susceptible to many different diseases. Diseases are caused by pathogens, which can be bacterial, viral or parasitic. Common diseases of pigs can spread or transmit in multiple ways. When pigs from different farms are brought to a show and are mixed (commingled) with other pigs with a different health status, the risk of catching a disease can be high. Therefore, a biosecurity plan should take into account how diseases are transmitted and try to minimize exposure as much as possible.

## Routes of disease transmission

**Direct Transmission:** The transfer of disease from one pig to another, which is the most common method of disease transmission. Direct transmission can include:

- **Contact:** Nose-to-nose contact that results in an infection
- **Aerosol:** Exposure to droplets in the air from an infected pig (cough, sneeze, dust)
- **Fecal:** Ingestion of infected manure or bedding
- **Reproductive:** Transmission of disease during the breeding process (i.e. infected semen)

**Indirect Transmission:** The spread of disease from pig to pig by exposure to dirty object(s) (i.e. scale, brushes, sprayer or trailer).

**Vector-borne Transmission:** The spread of a disease to a pig by biting insects, such as a mosquito or a tick.



# General Biosecurity

## Isolation

Isolation means keeping a new pig or a pig returning from a fair or exhibition separate from animals already on the farm for a set amount of time. Isolation provides a period of time for you to watch your pig for signs of disease before going back into your herd.

- ☑ House new or returning pigs in a separate facility.
- ☑ Work with pigs in isolation last in the day.
- ☑ Wear separate boots/footwear for isolation chores or wash boots after finishing chores and allow them to dry before use the next day.

## Cleaning & Disinfection

Cleaning and disinfection of your facilities, trailers and equipment (used in the barn as well as traveling) should be a top priority in your biosecurity plan. Proper cleaning can greatly reduce the risk of disease spread by removing the dirt and manure that pathogens can live in. Disinfection and drying can further reduce the amount of pathogens on surfaces. Suggested steps for proper cleaning, disinfection and drying are listed below.



### Cleaning

- ★ Cleaning equipment and trailers should occur away from the pigs that are on your farm.
- ★ Remove all bedding, dirt and manure.
- ★ Wash your equipment/rooms with the hottest water possible. Detergents, similar to those used for dish washing, may make cleaning much easier.
- ★ Make sure to clean all equipment that has gone to a show, including feeders/waterers, hoses and show box items (show equipment, sort panels, brushes, etc.).

### Disinfection

- ☑ Use disinfectants only after cleaning.
- ☑ Apply disinfectants according to the label directions. Directions may include how long a disinfectant needs to be on a surface and rinsing procedures.

### Drying

- ☑ Allowing equipment to fully dry is important to kill pathogens.
- ☑ Drying can be done by direct sunlight, by time or by adding a heat source.

## Exposure to people and other traffic

People can transfer pathogens on their body and/or clothing to pigs.

Vehicles also can carry unwanted pathogens and expose your pigs.

- ☑ Limit visitors to only those who have a reason to be at your farm and only allow visitors when you are present.
  - ☑ Visitors need to wear clean boots or plastic boot covers and clean clothing.
  - ☑ Limit vehicle access to your pig project area.
- ➔ Control of wildlife, birds and other pests

Wildlife, birds and rodents can readily transmit many diseases.

- ☑ Keep the area around your barn free of weeds, debris or feed to make the area less desirable for unwanted pests.
- ☑ Utilize fencing, bird netting or other materials to keep pests out of the barn or away from the building.
- ☑ Use rodent baits according to label directions and keep baits out of reach of your pigs.
- ☑ If a pig dies, dispose of the remains in a timely manner so it is not accessible to other animals.



**People and vehicles can carry and transmit pathogens. To protect the health of your pigs, limit visitors and vehicle traffic.**





# Ready to Start Your Project?

Preparing to bring your pig home involves more than just setting up a pen. Following a biosecurity plan can get your project started in the right direction.

## Identify and Involve Experts for Your Project

**There are many people with different areas of expertise that can help you, including veterinarians, nutritionists, breeders, Extension specialists, ag instructors and club leaders.** Establish a veterinarian-client-patient relationship (VCPR) with your local veterinarian to help monitor herd health, complete necessary paperwork as directed by show rules, and review biosecurity standards. An expert can:

- ★ Help you develop a biosecurity plan
- ★ Help you determine the farm health history and identify any potential concerns
- ★ Continue to assist you throughout your project

## Put Your Biosecurity Plan into Action

Now that you have a plan, is your facility ready for your pig?

- ★ Do you have the items necessary to carry out your biosecurity plan?
- ★ Are the pen, feeders, waterers and other equipment clean, disinfected and dried?
- ★ Are you prepared to control disease exposure from people, wildlife and vehicles?





The selection process should include a focus on determining the health and potential performance of pigs that you will purchase and/or for pigs that you raised at home.

Take the time to identify and work with swine experts to plan and prepare for your pig project to maximize your pig's health.

## Selecting a Pig for Your Project

A successful pig project starts with a healthy pig. To ensure that you acquire the best pig you can, begin your search by not only evaluating a pig's show ring potential, but also the health status of the farm the pig is coming from.

If you are raising your own pigs for show:

- ☑ Ensure that purchased or delivered semen and/or breeding stock are free of clinical disease or have a "minimal disease" history.
- ☑ Use facilities that are separate from the home herd to isolate new and returning animals and to test for targeted diseases.
- ☑ Review your vaccination protocol with your veterinarian.

If you are purchasing your pig for show:

- ☑ Review the current herd health history.
- ☑ Inquire if there have been any health challenges in the current group of pigs for sale. If so, have they been treated and with what product?
- ☑ Ask about current vaccinations the pig has received. When were the vaccinations given?
- ☑ Make sure to get contact information if you have any further questions.

# Preparing to Show

**Protect the health of all pigs at the show by working with your veterinarian for specific vaccination needs and testing requirements and by adhering to your biosecurity plan to reduce disease exposure and transmission.**

Prior to attending a show, review your biosecurity plan to be prepared to protect your pig's health. Many fairs and exhibitions require health papers that list specific vaccines given, such as influenza, and may require targeted health testing, such as for PRRS or PEDV. Make sure to bring a written record of all your pig's treatments and vaccinations. As part of your biosecurity plan, work with your veterinarian to determine the appropriate vaccination schedule and testing needs for your pig.

## Steps to consider prior to going to a show:

- ☑ Complete all necessary training and paperwork needed for the show in a timely manner—Youth for the Quality Care of Animals (YQCA) and Pork Quality Assurance Plus® PQA Plus® are two options.
- ☑ Make sure that your pig meets the local, county, state or national requirements for your show, including identification, vaccinations and health papers.
- ☑ Take only clean and disinfected equipment to the show to prevent any potential pathogen transfer from your pig to others.
- ☑ Have adequate supplies so you will not have to borrow or share equipment to prevent getting an unwanted disease from other pigs.
- ☑ Only take healthy pigs to a show, fair or exhibition.
- ☑ Evaluate your pig's health on a daily basis prior to the show:
  - ➔ Is your pig eating normally?
  - ➔ Is your pig coughing, “thumping” or having trouble breathing?
  - ➔ Does your pig have a fever? Does it appear depressed?
  - ➔ Does your pig have loose stools?
  - ➔ Does your pig limp or have sores on its feet?



# At the Show

Direct contact between pigs is the most common way diseases are spread. Following the principles of biosecurity and disease prevention to minimize unnecessary contact with unrelated swine or equipment during the exhibition.



## What key biosecurity steps should I take at the show?

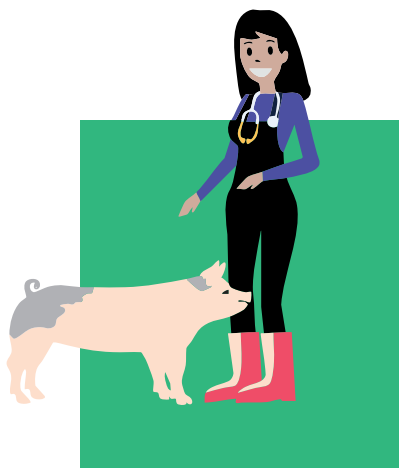
- ☑ Do not borrow or share equipment with other exhibitors.
- ☑ Monitor your pig daily for signs of illness.
  - ➔ Is your pig eating normally?
  - ➔ Is your pig coughing, “thumping” or having trouble breathing?
  - ➔ Does your pig have a fever or is it depressed?
  - ➔ Does your pig have loose stools?
- ☑ If you suspect that your pig is sick, inform the show veterinarian or another show official immediately.
- ☑ Keep your area and equipment clean.
- ☑ Wash your hands frequently with warm soapy water after contact with pigs or equipment.

## Other health concerns to consider while at the show:

Certain diseases, such as influenza, are considered to be zoonotic, meaning that they have the ability to spread from people to pigs and from pigs to people. Having a biosecurity plan in place at the show can help minimize the potential for pathogen transfer and protect both human and animal health.

Consider the following:

- ★ Do not eat or drink in animal areas.
- ★ Wash your hands frequently.
- ★ Do not sleep in animal areas.
- ★ If you feel ill, seek medical attention.

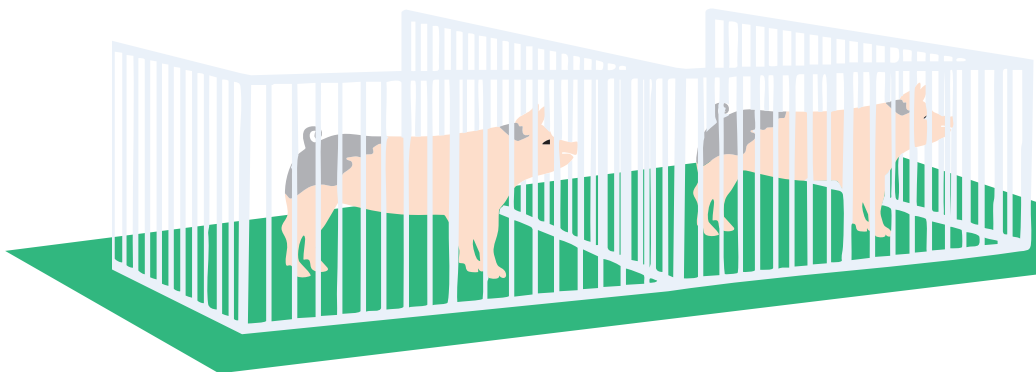


# Returning Home

**As you become involved in showing swine, it is important to understand the impact that you can have on the health of all pigs. By incorporating a biosecurity plan, you are helping to ensure the health of your pig throughout your project.**

The implementation of a biosecurity plan does not stop at the end of a show. Taking biosecurity precautions when you return home is just as important as those you take before and during the show. Biosecurity steps to consider when you return home:

- ☑ Clean, disinfect and dry all equipment that was taken to the show, including trailers, even if the show was terminal.
- ☑ Isolate any returning pigs from your home herd.
- ☑ Work with your veterinarian to determine the length of time for isolation and for any health testing requirements.
- ☑ Monitor returning pigs daily for signs of illness and alert your veterinarian if you have concerns about your pigs' health.
- ☑ If your pigs become ill, it is very important to allow them to fully recover before taking them to another show.



**If you notice any health problems in your pigs, be sure to contact your veterinarian as soon as possible. Your veterinarian will work with you to develop a treatment schedule.**

## Glossary

---

### **Biosecurity**

A combination of management practices designed to prevent the introduction and transmission of diseases and disease-causing agents into a herd

### **Commingle**

To mix, combine or bring together unrelated pigs into direct contact with each other in one location (by pen, arena or barn)

### **Disinfection**

The use of a chemical product on equipment/surfaces that can inactivate or kill disease-causing pathogens

### **Pathogen**

Organism (bacteria, virus or parasite) that can cause a disease

### **Transmission**

Spread of a pathogen from one animal to another

### **Zoonotic**

A disease-causing pathogen transmitted between animals and humans

## References

---

1. National Pork Board. "2024 NPB Producer Survey." National Pork Board, 2024. National Pork Board. "2024 NPB Producer Survey." National Pork Board, 2024.
2. Girgis, Courtney Leeper. "Inside the 2024 Pork Powerhouses: Who's Up, Who's Down, and Who's Back on the List?" Agriculture.com, 2025. May 19, <https://www.agriculture.com/pork-powerhouses-2024-a-year-of-recovery-big-changes-at-the-top-11726797>

## Other Resources Include:

---

"2024 NPB Producer Survey." Agriculture.com, 2024, <https://www.agriculture.com/pork-powerhouses-2024-sow-numbers-pigprofits-down-while-productivity-up-8641051>.

Zimmerman, Jeffrey J., Locke A. Karriker, Alejandro Ramirez, et al. Diseases of Swine, 11th ed., Wiley-Blackwell, 2019.

"Biosecurity for Youth Exhibitors." National Pork Board, May 2019, <https://www.pork.org/blog/biosecurity-youth-exhibitors>.

Levis, D., and R. Baker. "Biosecurity of Pigs and Farm Security." University of Nebraska Lincoln Extension, 2011, <https://porkgateway.org/wp-content/uploads/2015/07/biosecurity-of-pigs-and-farm-security1.pdf>.

"Youth for the Quality Care of Animals." YQCA, <https://yqca.org>.



## Notes

[illegible]

[illegible]



American Association of Swine Veterinarians  
830 26<sup>th</sup> St., Perry, IA 50220-1703  
[aasv.org](http://aasv.org) | 515-465-5255



National Pork Board  
1776 NW 114<sup>th</sup> St., Clive, IA 50325  
[pork.org](http://pork.org) | 800-456-7675



©2025 National Pork Board, Des Moines, IA  
This message funded by America's Pork Checkoff.